



Welcome to Clarien iPortfolio
Your Personal Financial Portal

Stay Connected to Your Financial Picture



Home Page

At-a-glance view of pertinent account information

Portfolio

Dynamic view of your entire portfolio

Vault

Easily keep track of your statements

Login Questions

Helpful hints

Home Page



When you log in, you'll see your personalized home page. Across the top, you have quick access to the other pages of your portal.

Your accounts and total portfolio value are listed front and center.

You can stay connected to your financial team with clickable links to phone numbers, emails, and office locations.

Home Page

MIKE DEMO TEAM

HOME MY ACCOUNTS PORTFOLIO VAULT [Back to UX 1.0](#) MIKE ▾

Good Afternoon, Mike!

Total Value
\$32,879,951.64

Accounts

Investment Accounts

test account - XXXXXXXX6726 XXXXXXXXXX6726	\$0.00
test account - XXXXXXXX0909 XXXXXXXXXX0909	\$0.00
test account - XXXXXXXX4724 XXXXXXXXXX4724	\$0.00

Brokerage Accounts

Williams Trust - PIMCO - XXXX2303 XXXXX2303	\$9,532,896.85
--	----------------

Trust Account

Williams Foundation - XXXX7621 XXXXX7621	\$6,436,044.19
Williams Rev Trust - XXXX5416 XXXXX5416	\$3,600,058.85

401k Accounts

Williams Managed Growth Fund - XXXX2968 XXXXX2968	\$1,703,995.18
--	----------------

IRA Accounts

BD CAPITAL PARTNERS - XXXXX6-AI XXXXXX6-AI	\$1,080,322.00
---	----------------

CLARIEN iPORTFOLIO

✉ info@deliver.com
☎ 1 (800) 555-5555
📍 9000 Southside Blvd, Suite 7500, Jacksonville, FL, 32256

About Us

Our objective is to assist our clients in achieving their financial goals by employing a disciplined and simplified investment management approach.

My Financial Team

Harvey Page
Senior Advisor
mpensin@ascinc.com
(555) 976-5135

Andre Horton
Senior Financial Planner
ahorton@deliver.com
(555) 987-0213

Beatrice Clark
Tax Advisor
bclark@deliver.com
(555) 703-5405

Connor Hudson
Financial Analyst
chudson@deliver.com
(555) 321-9537

Top Holdings

Updated Name	\$864,881
DIAMOND REAL ESTATE PARTNE...	\$234,888

External Links

- Investor Information
- Integrations
- Client Testimonials

Quickly view your accounts as an aggregate total or grouped by category

View notifications from your advisor

Update your account settings

Portfolio



The Portfolio dashboard is where you can view additional details about your portfolio. The dashboard gives you a dynamic overview of your portfolio with performance cards highlighting key information of your portfolio.

To get even more detail, you can click on the title of each card. You can also use the drop-down menu to switch between the different cards quickly.

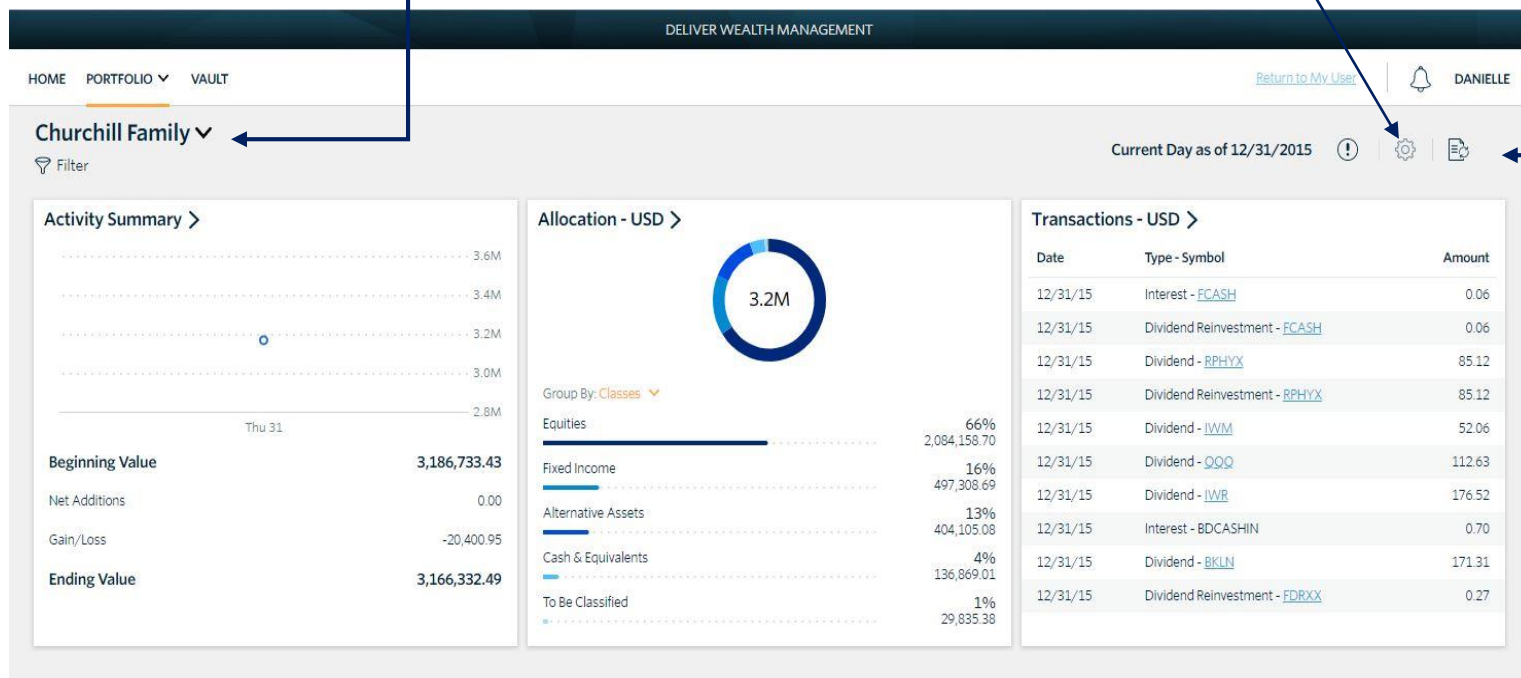
All of this is completely customizable using the filters to select specific date ranges, portfolios, or accounts.

Portfolio


Change your portfolio or filter for specific accounts

Update Supervised settings

Run Reports directly from your portal



Vault



Securely managing documents is key to working with your wealth management team. The Vault page is where you can keep track of all your important financial documents.

From here, you can organize your documents into folders and easily move files from one folder to another.

From the Statements and Reports folders, you have quick access to view investment focused reports created by your financial team.

Vault

The screenshot displays the 'Vault' section of a financial software interface. At the top, a dark blue header bar contains the text 'MIKE DEMO TEAM'. Below this, a navigation bar includes links for 'HOME', 'MY ACCOUNTS', 'PORTFOLIO', and 'VAULT' (which is currently selected). On the right side of the navigation bar, there is a 'Back to IX 1.0' link, a notification bell icon, and the user name 'MIKE' with a dropdown arrow.

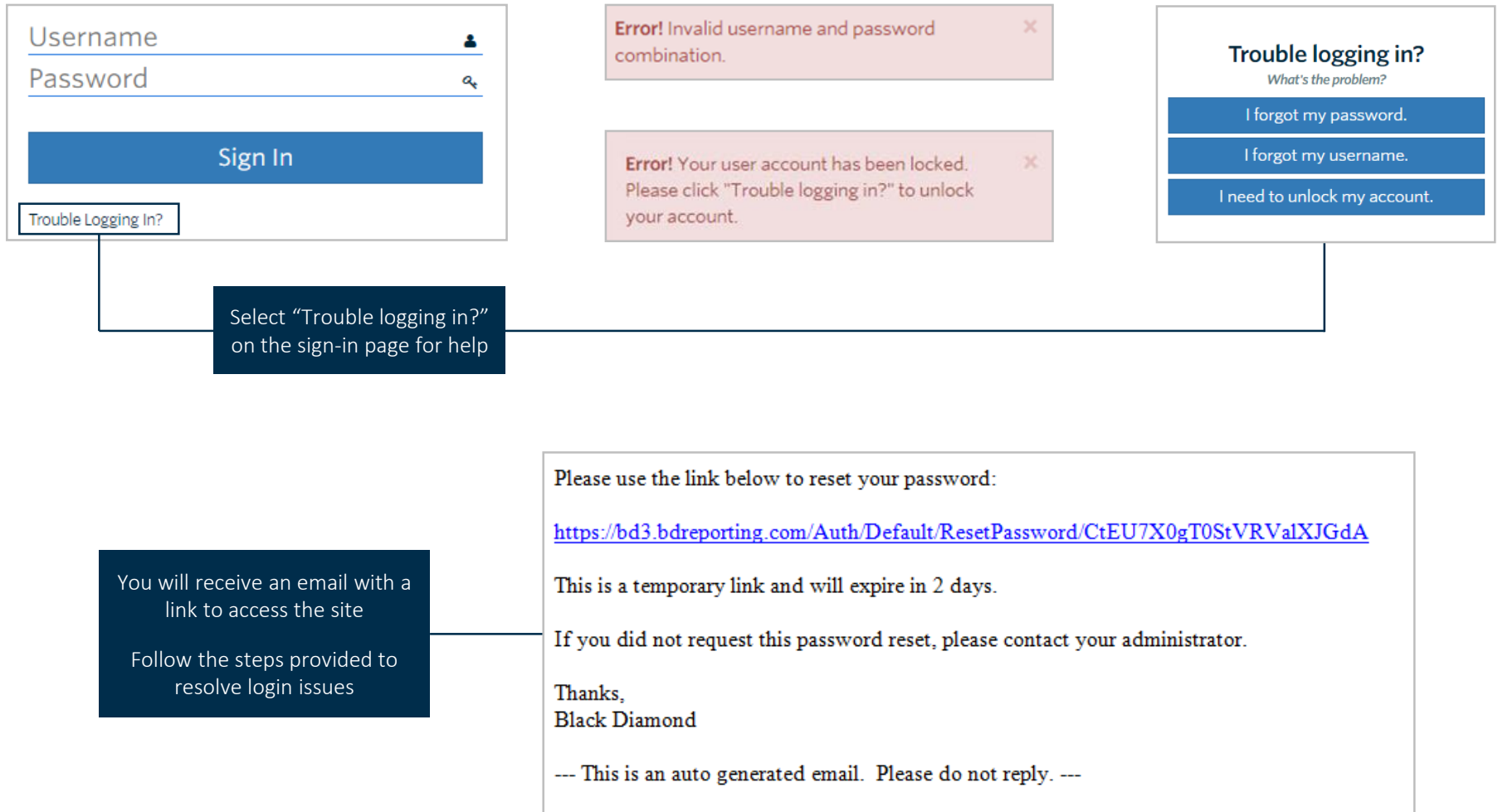
The main content area is titled 'My Files' and features a search bar on the right. On the left, a sidebar lists navigation options: 'My Files' (selected), 'Shared With Me', 'Trash', 'Reports', and 'Statements'. The central part of the interface shows a table of files with columns for 'Name', 'Owner', 'Last Modified', and 'File Size'. Two files are listed: 'Michael's Documents' and 'Tax Documents', both owned by 'M. Persin' and last modified on '05/08/2018'. Above the table, a toolbar provides actions: 'Rename', 'Share', 'Move', 'Delete', 'Download', and a 'New' button with a dropdown arrow. To the right of the table, a detailed view for 'Michael's Documents' shows the owner 'Mike Persin', the creation date '05/08/2018', and the size '--'.

Two dark blue callout boxes provide additional context:

- Securely store documents/files, view generated reports and custodial statements** (points to the sidebar navigation).
- Quickly edit, move or download your files as needed** (points to the toolbar).

Login Problems

How to access your account if you have trouble signing in to the site





Your personalised portal keeps you connected to your financial life, your advisory team, and everything else you need for managing your wealth.



If you have any questions,
please contact Clarien at
296.1111 or by email at
BSX@ClarienBank.com.



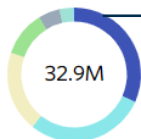


Appendix: Navigating other cards

Allocation

View the allocation breakdown of your portfolio

Allocation >



12/31/2013

XXXX4442 - Williams - Alliance
Bernstein

Actual: 10,435,640

Weighting: 31.7%

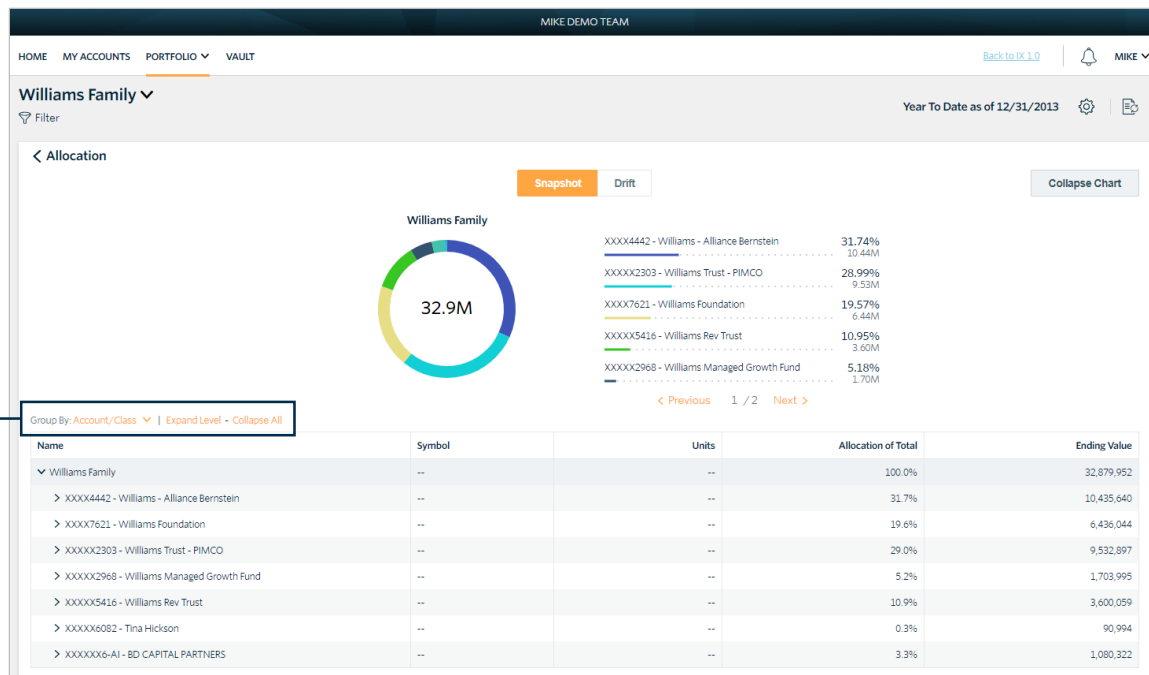
Hover to view
grouping level
allocation detail

Group By: Account/Class

XXXX4442 - Williams - Alliance Bernstein	31.74%
XXXX2303 - Williams Trust - PIMCO	28.99%
XXXX7621 - Williams Foundation	19.57%
XXXX5416 - Williams Rev Trust	10.95%
XXXX2968 - Williams Managed Growth Fund	5.18%

Consolidated View

Change the data
grouping from the
dashboard or the
expanded card



Expanded View

Activity Summary

View activity and changes in your portfolio or account balance



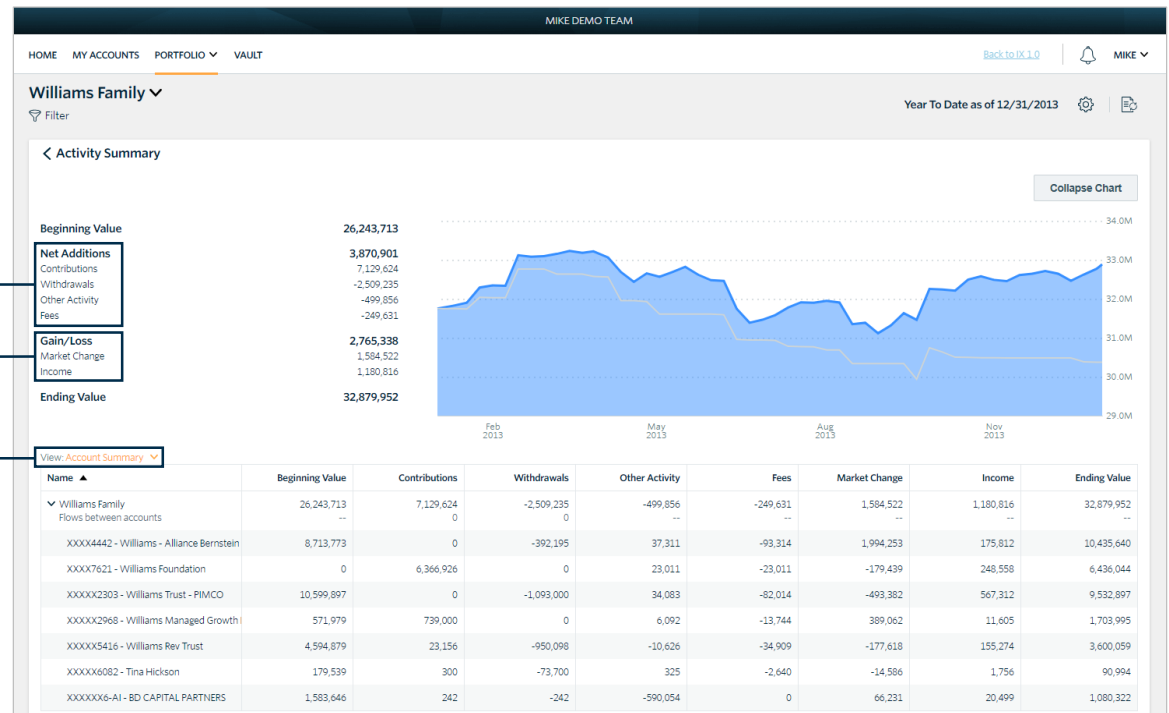
Consolidated View

View breakout of additions and withdrawals

See income and performance breakouts

Toggle to view either summary detail or transactions

Hover over graph to view net addition and market value information for a specific date



Expanded View

Transactions

View and filter the most recent transactions in your portfolio

Transactions >		
Date	Type - Symbol	Amount
12/31/13	Management Fee - CASH	-12,871
12/31/13	Management Fee - CASH	-34,083
12/31/13	Dividend - FTEXX	3
12/31/13	Management Fee - CASH	-37,311
12/31/13	Income Reinvestment - SCHWAB...	0
12/31/13	Management Fee - CASH	-325
12/31/13	Interest - FCASH	0
12/31/13	Capital Gains - DXJ	237
12/31/13	Capital Gains - DXJ	99
12/31/13	Dividend - DXJ	201

Consolidated View

Filter by transaction

Settings

Supervised

☒ All Assets
☐ Supervised Only
☐ Unsupervised Only

Transaction Type Filter

Select filters to apply to data table (not applicable to the Dashboard Summary)

Select All - Deselect All

☐ Buys
☐ Sells
☐ Management Fees
☐ Expenses

☐ Capital Gains
☐ Income
☐ Alternatives
☐ Other

☐ Contributions
☐ Withdrawals

Apply

Cancel

MIKE DEMO TEAM

HOME

MY ACCOUNTS

PORTFOLIO

VAULT

Back to IX 1.0

3

MIKE

Williams Family

Filter

Year To Date as of 12/31/2013

Filters - 2 Types

Buy
Sells

< Transactions

Date	Account Number	Account Name	Action	Type	Asset Name	Symbol	Units	Price	Amount	Description
12/24/13	XXXXX2303	Williams Trust - PIMCO	Buy	Buy	FEDERAL HOME LN BK CONS DISC NOTES 0.000% 01/02/14 B/ETD 01/02/13	313385RG3	200,000	100	199,988	--
12/24/13	XXXXX2303	Williams Trust - PIMCO	Sale	Sale	FEDERAL HOME LN BK CONS DISC NOTES 0.000% 01/02/14 B/ETD 01/02/13	313385RG3	200,000	100	-199,988	--
12/24/13	XXXXX6082	Tina Hickson	Buy	Buy	ISHARES INC MSCI MEXICO	EWV	36	68	2,438	--
12/23/13	XXXXX6082	Tina Hickson	Buy	Buy	ISHARES INC MSCI MEXICO	EWV	33	67	2,218	--
12/23/13	XXXXX6082	Tina Hickson	Buy	Buy	WISDOMTREE JAPAN HEDGED EQUITY	DXJ	45	50	2,266	--
12/23/13	XXXXX6082	Tina Hickson	Sale	Sale	MARKET VECTORS ETF TR VIETNAM ETF	VNM	675	18	-12,406	--

Expanded View